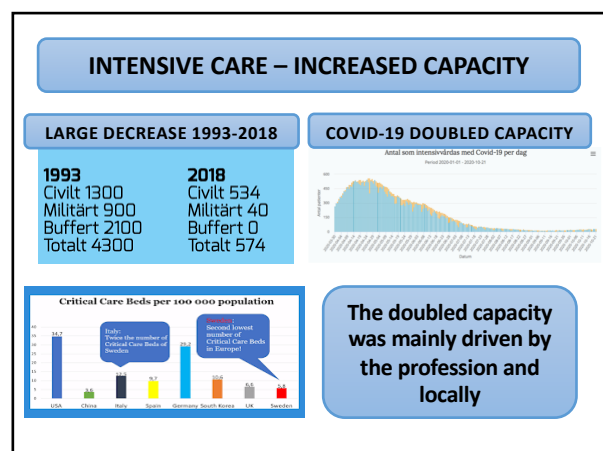
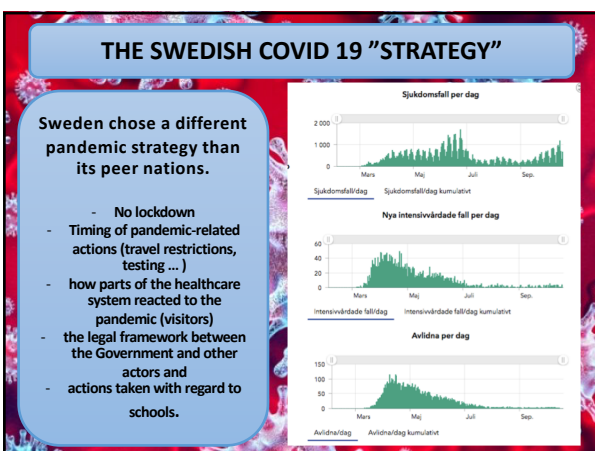
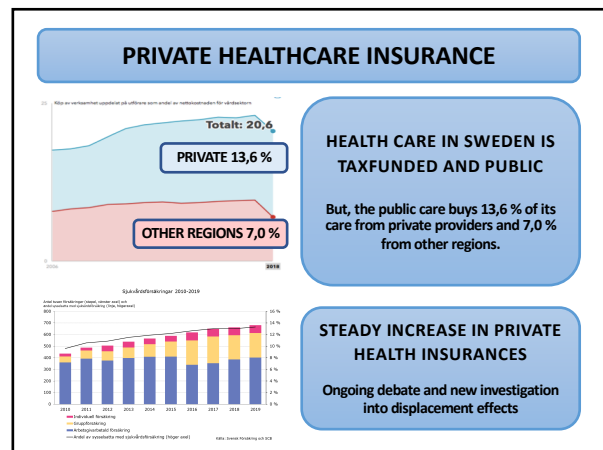
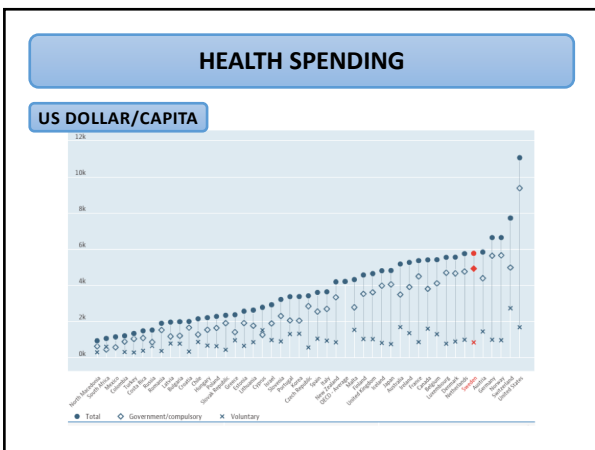
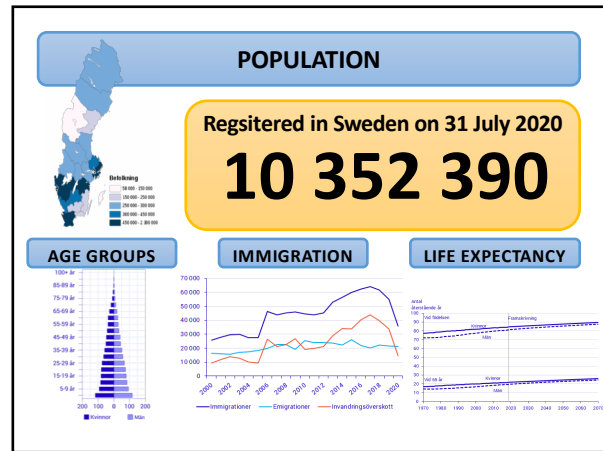




**ASSOCIATION EUROPÉENNE DES MÉDECINS DES HÔPITAUX  
EUROPEAN ASSOCIATION OF SENIOR HOSPITAL PHYSICIANS  
EUROPÄISCHE VEREINIGUNG DER LEITENDEN KRANKENHAUSÄRZTE  
EUROPESE VERENIGING VAN STAFARTSEN  
DEN EUROPÆISKE OVERLÆGEFORENING  
ΕΥΡΩΠΑΪΚΟΣ ΣΥΛΛΟΓΟΣ ΝΟΣΟΚΟΜΕΙΑΚΩΝ ΙΑΤΡΩΝ ΔΙΕΥΘΥΝΤΩΝ  
ASSOCIAZIONE EUROPEA DEI MEDICI OSPEDALIERI  
DEN EUROPEISKE OVERLEGEFORENING  
ASSOCIAÇÃO EUROPEIA DOS MÉDICOS HOSPITALARES  
ASOCIACIÓN EUROPEA DE MÉDICOS DE HOSPITALES  
EUROPEISKA ÖVERLÄKARFÖRENINGEN  
EVROPSKO ZDRŽENJE BOLNIŠNIČNIH ZDRAVINIKOV  
EUROPSKA ASOCIACIA NEMOCNICNÝCH LEKAROV  
EUROPSKA UDRUGA BOLNIČKIHI LIJEČNIKA  
ΕΒΡΟΠΕΪΣΚΑ ΑΣΟCΙΑCΙΑ ΗΑ ΣΤΑΡΣΗΤΕ ΒΟΛΗΙΧΝΗ ΛΕΚΑΡΗ  
ASOCIAȚIA EUROPEANĂ A MEDICILOR DIN SPITALE**

<b>Document :</b>	<b>AEMH 20-018</b>
<b>Title:</b>	<b>National Report Sweden</b>
<b>Author :</b>	<b>Swedish Association for Senior Hospital Physicians</b>
<b>Purpose :</b>	<b>Information</b>
<b>Distribution :</b>	<b>AEMH Member Delegations</b>
<b>Date :</b>	<b>19 October 2020</b>



### HOSPITAL BEDS

**The Countries With The Most Hospital Beds**  
Total hospital beds per 1,000 of the population in selected countries\*

Japan	13.3
South Korea	11.0
Germany	8.3
Poland	6.6
France	6.3
Australia	3.8
United States	2.9
Ireland	2.8
United Kingdom	2.8
Canada	2.7
Turkey	2.7
Sweden	2.6

**Continued decline from low levels despite an increased number of elderly**

**The decline in recent years is more driven by the economy than by medical needs**

**2.1 BEDS/1000**

**DOUBLING OF OVERCROWDED**

### NEW REFORM - PRIMARY HEALTH CARE

**Government inquiry was presented on 1 April 2020**

- A more central role and show that primary care is the hub of Swedish healthcare.
- Regular doctor contact (fast läkare)
- Regulate the number of listed patients/doctor
- Government investment to fund 1,250 GP's until 2027

### DIGITAL DOCTOR "VISITS"

**DIGITAL VISITS PER MONTH**

- The area is little highlighted in the research.
- Patients prefer physical care visits over digital video visits, but wait times are highly valued
- To avoid the spread of infection during covid-19, digital healthcare contacts have become important

### MEDICAL LEADERSHIP

**The number of managers in healthcare is increasing but the proportion who are doctors is decreasing and also a decrease at higher strategic levels.**

**Percentage of managers being physicians decrease**

Brommels et al Karolinska showed in a report 2017 "Physicians' role in the management and leadership of health care"

**Clinician involvement in hospital management can lead to superior performance.**

**In contrast to the conventional view of conflicting logics, medical leadership would benefit from a more integrative model of management and medicine.**

Marie Savage's doctoral thesis – defence November 6<sup>th</sup>

**"Medicine and management have now a clearly established value in what they together can create"**

### INCREASE IN NUMBER OF PHYSICIANS

**PHYSICIANS/1000 INHABITANTS**

**PHYSICIAN GENDER IN %**

PROFESSIONAL 2019	44	56
LICENSED 2018	48	52

Women | Men

- The total number of physicians increased with 10 000 2005-2018
- 65 % of the increase are born abroad
- The gender difference decreases

### MORE ADMINISTRATORS THAN DOCTORS

**35,87%** är ökningen av antalet chefer, handläggare och administratörer. Det motsvarar 8 242 årsarbetare.

**15,75%** är ökningen av antalet läkare. Det motsvarar 3914 årsarbetare.

**During the period 2010 to 2017, administrators increased by 36% compared to 16% more doctors.**

### HEIDI STENSMYREN – NEW WMA PRESIDENT?

**WORLD MEDICAL ASSOCIATION**

WMA was founded in 1947. The purpose of the WMA is to serve humanity by endeavoring to achieve the highest international standards in Medical Education, Medical Science, Medical Art and Medical Ethics, and Health Care for all people in the world.

WMA will elect new president on the 30th of October 2020. The present president of the Swedish medical association is the only remaining candidate.